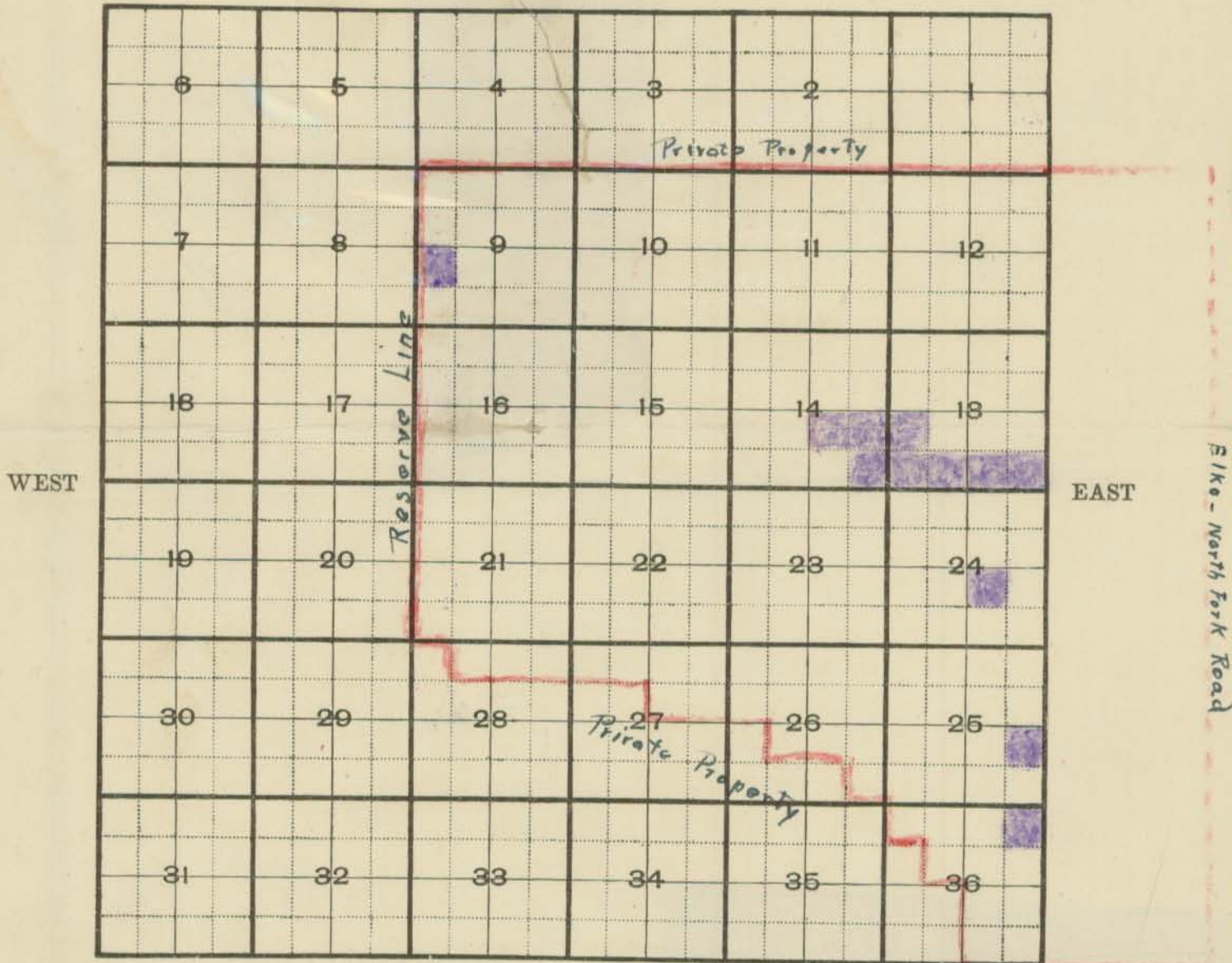


NORTH

Township No. 40 N Range No. 54 E Mount Diablo Base and Meridian



5M-12-14-12

Scale 80 Chains (1 mile) to an inch

SOUTH



A.S. - C.B. Evans



Area used by A.S. & C.B. Evans as range & lambing grounds.

address:  
EKO, NEV.

**FILED**  
 December, 22, 1929  
 STATE ENGINEER'S OFFICE

12/21/29

426-34