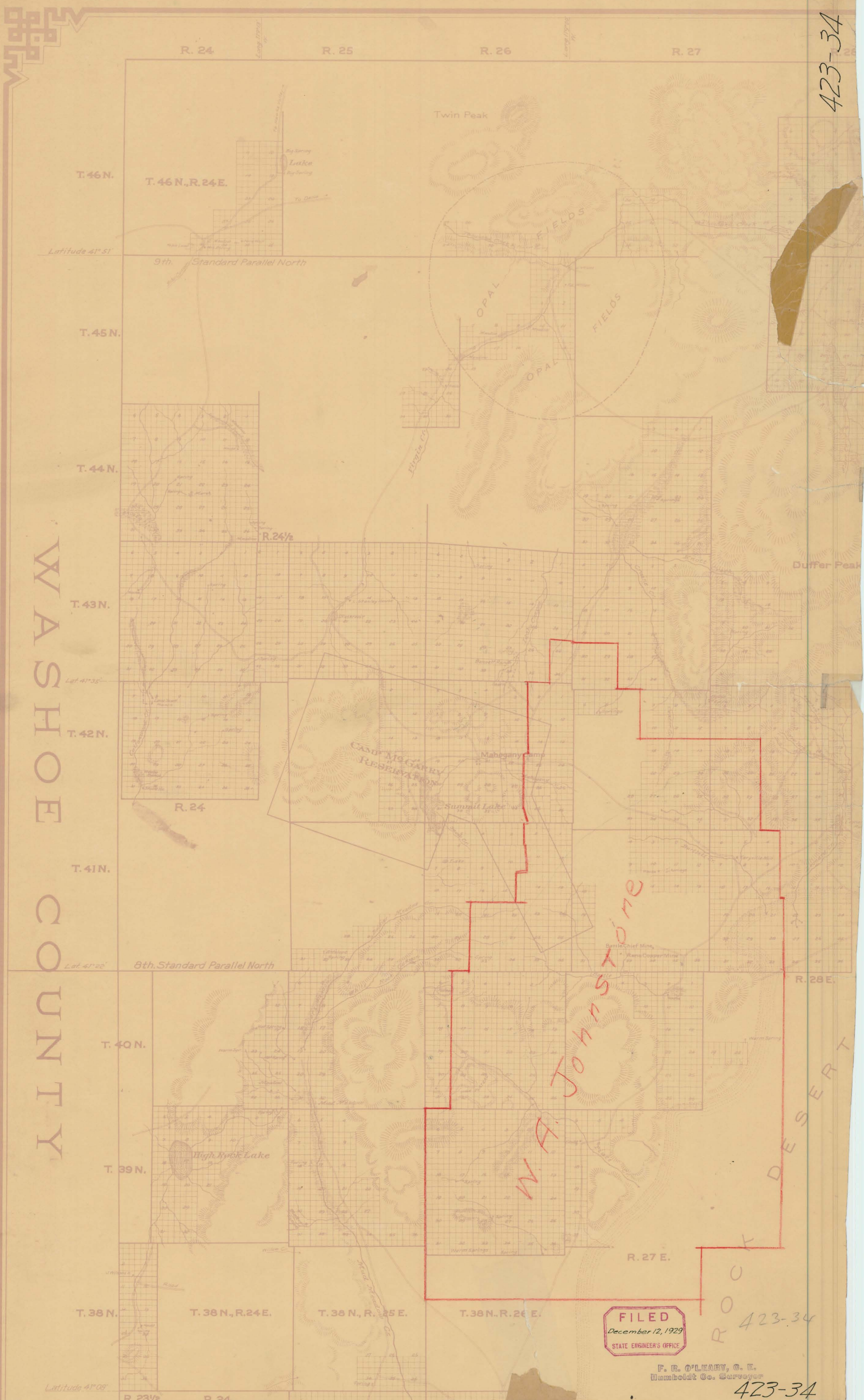


423-34



WASHOE COUNTY

F. B. O'LEARY, C. E.
Humboldt Co. Surveyor

OFFICE
STATE ENGINEER
RECEIVED
DEC 12 1929

FILED
December 12, 1929
STATE ENGINEER'S OFFICE

F. B. O'LEARY, C. E.
Humboldt Co. Surveyor

423-34

423-34