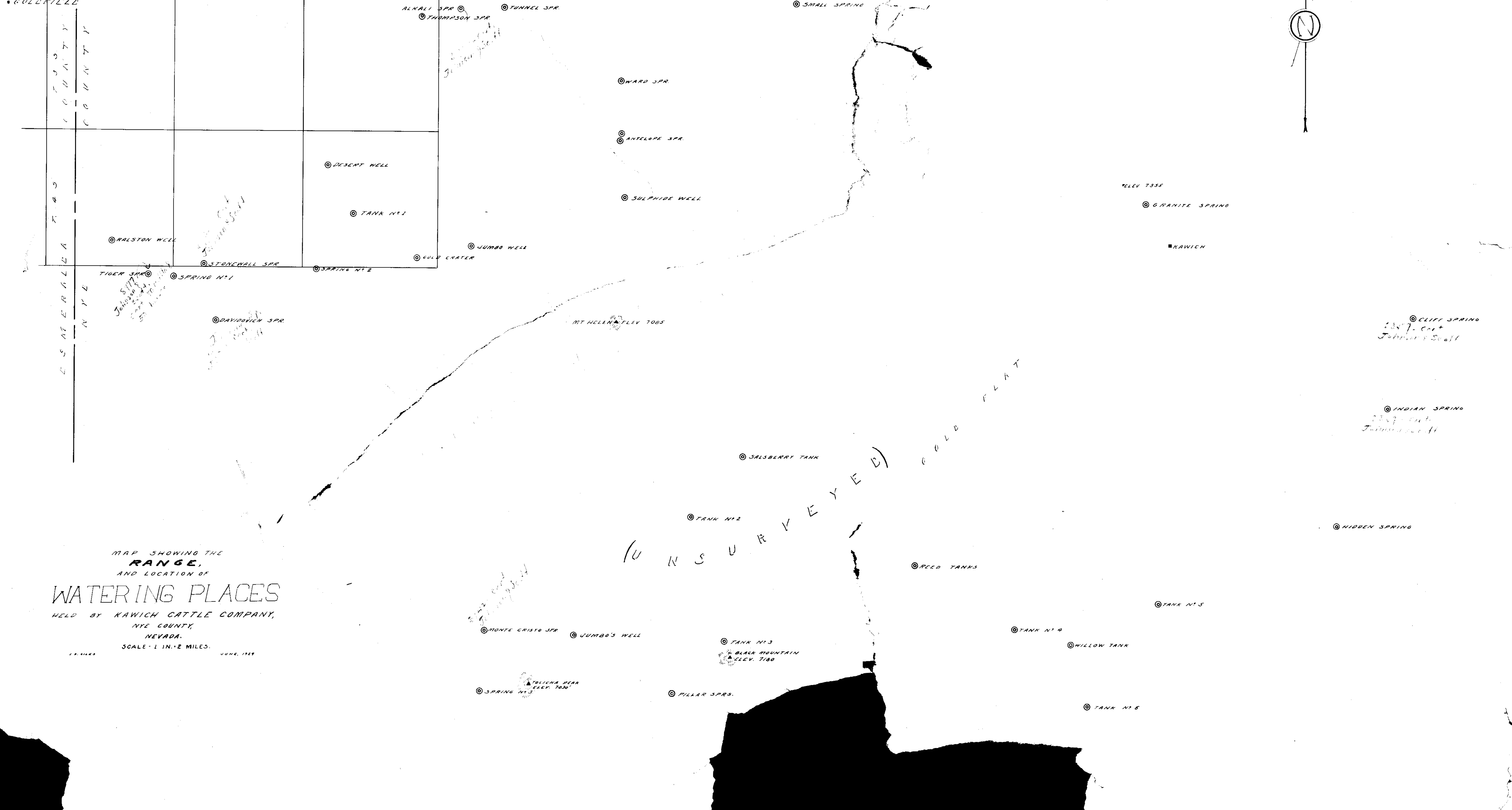
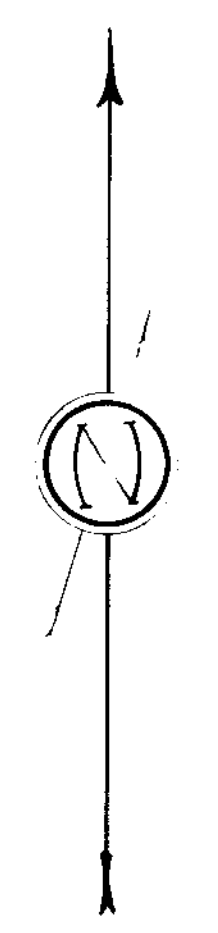


GOLDFIELD
 T 23 (M.D.M.)
 T 24
 T 25
 T 26
 T 27
 T 28
 T 29
 T 30
 T 31
 T 32
 T 33
 T 34
 T 35
 T 36
 T 37
 T 38
 T 39
 T 40
 T 41
 T 42
 T 43
 T 44
 T 45
 T 46
 T 47
 T 48
 T 49
 T 50
 T 51
 T 52
 T 53
 T 54
 T 55
 T 56
 T 57
 T 58
 T 59
 T 60
 T 61
 T 62
 T 63
 T 64
 T 65
 T 66
 T 67
 T 68
 T 69
 T 70
 T 71
 T 72
 T 73
 T 74
 T 75
 T 76
 T 77
 T 78
 T 79
 T 80
 T 81
 T 82
 T 83
 T 84
 T 85
 T 86
 T 87
 T 88
 T 89
 T 90
 T 91
 T 92
 T 93
 T 94
 T 95
 T 96
 T 97
 T 98
 T 99
 T 100



MAP SHOWING THE
RANGE,
 AND LOCATION OF
WATERING PLACES
 HELD BY KAWICH CATTLE COMPANY,
 NYE COUNTY,
 NEVADA.
 SCALE - 1 IN. = 2 MILES. JUNE, 1914