

RANGE 44 E.

RANGE 45 E.

RANGE 46 E.

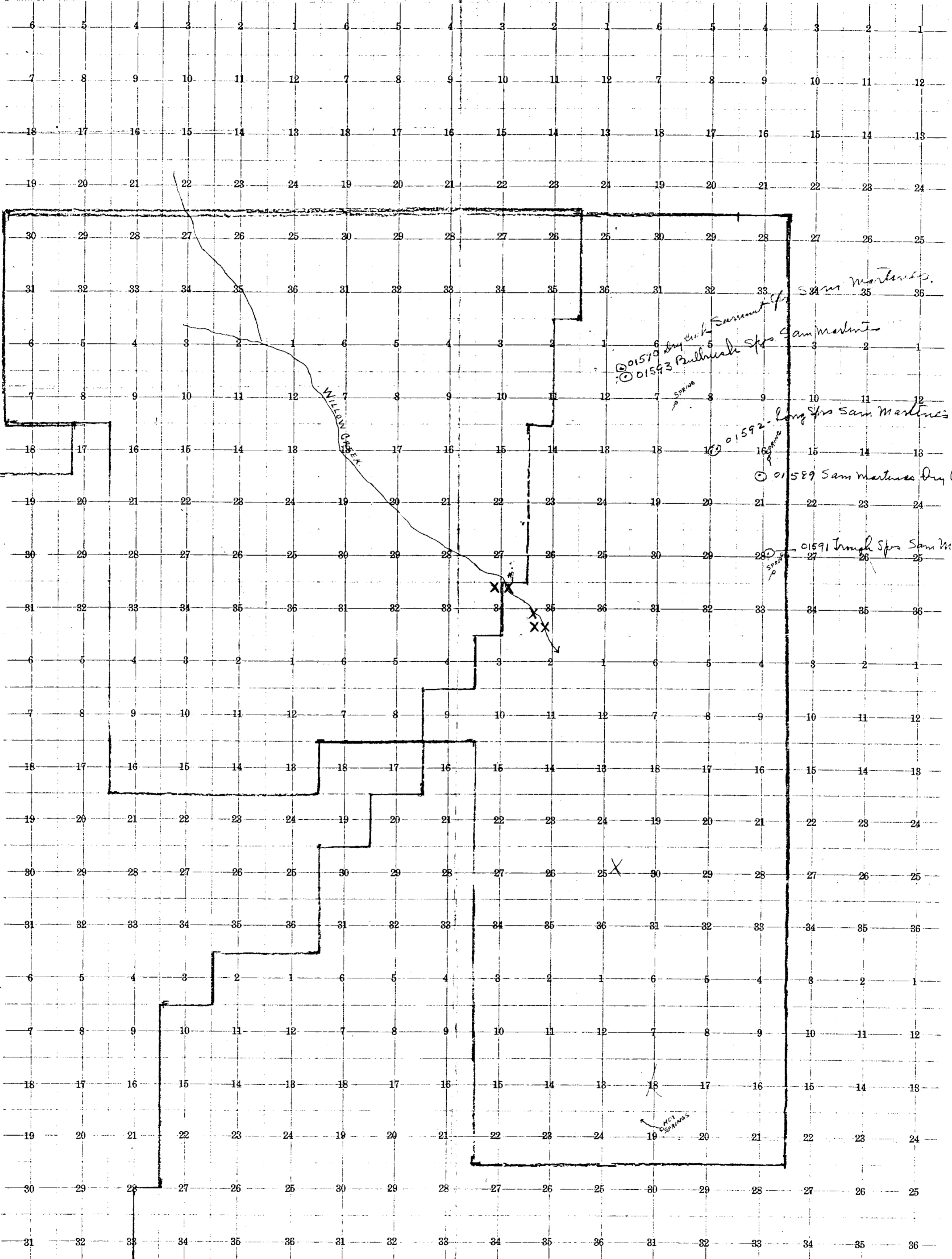
No. 84. 12 TOWNSHIPS. Printed and for Sale by Glass & Prudhomme Company, Portland, Or. 161603D

TOWNSHIP No. 20 N.

TOWNSHIP No. 19 N.

TOWNSHIP No. 18 N.

TOWNSHIP No. 17 N.



RANGE OF GEO. H. GIVENS, AUSTIN, LANDER COUNTY, NEVADA.

- Boundary of Range
- Boundary within his range of Forest Reserve
- X Patented Lands belonging to Geo. H. Givens.

299-34